

# IDEAL 4315 (TABLE TOP MODEL)

max.  
**40**  
mm

Office guillotine with electro-mechanical blade drive, manual clamp and EASY-CUT – for formats up to A3.

← **43 cm** →

Cutting length	430 mm
Cutting height	40 mm
Narrow cut	35 mm
Table depth	435 mm



optional stand

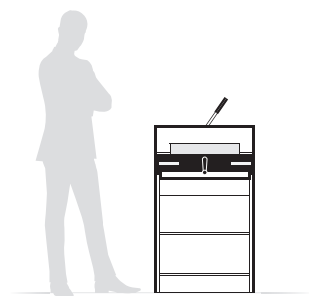


optional cabinet



## Technical specifications

Power	230 V / 50 Hz / 1~
Capacity	0.45 kW



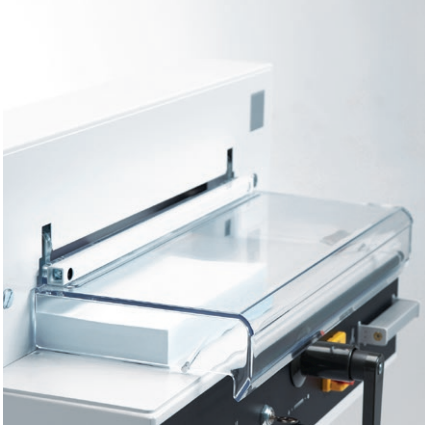
Dimensions	355 x 640 x 870 mm (H x W x D)
	height with stand 1085 mm
	height with cabinet 1080 mm
Weight	81 kg table top model
	91 kg with stand
	113 kg with cabinet

## Product characteristics

Equipped with the new, patented EASY-CUT blade activating bars for convenient and safe cutting. Comprehensive SCS safety package: hinged, electronically controlled safety guard on the front table; transparent safety cover on the rear table; main switch and safety lock with key; electronically controlled true two-hand operation; 24 volt control (low voltage); patented IDEAL safety drive; automatic blade return from every position; disc brake for instant blade stop; blade changing device with covered cutting edge; blade depth adjustment from the outside of the machine; easy blade change from the front of the machine without removing covers; cutting stick can be turned or replaced easily from the outside of the machine. Electro-mechanical blade drive. Cuts up to 500 sheets of paper (70 g/m<sup>2</sup>) or bound brochures up to 40 mm. Blade made of German high quality steel. Solid steel blade carrier. Adjustable blade guides made of hardened steel. Patented fast flick action clamp. Precision side lay. Spindle guided backgauge with hand crank. Digital measurement readout for backgauge positioning (cm or inches) on the front table. Optical cutting line with bright and durable LEDs. Solid all-metal construction. Designed as table top machine, a stand or a cabinet with storage shelf are available as an option (at an extra cost).

# IDEAL 4315 (TABLE TOP MODEL)

## Features



### TRANSPARENT SAFETY GUARD

A cut can only be executed, if the hinged, electronically secured safety guard on the front table is closed.



### HAND CRANK

Convenient setting of the backgauge via hand crank in combination with the digital measurement readout on the machine table. The precision backgauge spindle guarantees exact cuts.



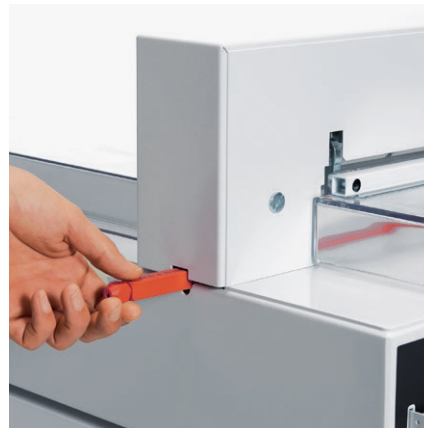
### PATENTED EASY-CUT ACTIVATING BARS

A cut can be executed conveniently by means of the patented EASY-CUT blade activating bars, which guarantee a safe two-hand operation.



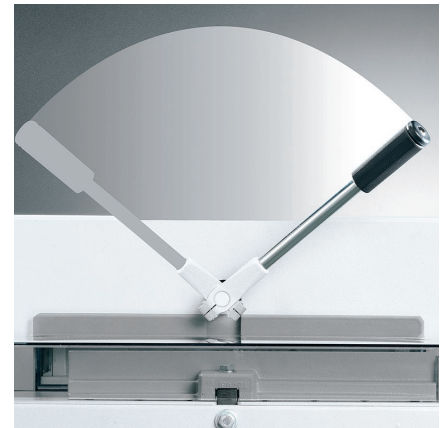
### DIGITAL MEASUREMENT READOUT

Easy-to-read digital display on the front table with switch-over from mm to inches by a push of a button.



### CUTTING STICK CHANGE

Turning or exchanging the cutting stick can easily be managed from the outside of the guillotine without using any tools.



### "FAST FLICK" ACTION CLAMP

Efficient cutting is guaranteed by the "fast flick" action clamp. Insert paper stack, throw the lever to tighten – cut.



# IDEAL